



4025 Dorchester Road, Suite 303 Niagara Falls, ON L2E 6N1 Canada

+1 (888) 332 3582    📞 +1 (905) 247-0555    ✉ sales@nextgentest.com

## NextGen Material Testing: Notch Making Machine – GenNotch 2000 Series

### Standards:

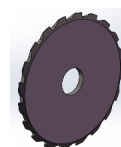
ISO 179, ISO 180, ASTM D6110, ASTM D 256, GB/T1043, and GB/T 1843

### Description:

The GenNotch 2000 Series is a motorized broaching machine designed for Charpy Test notch specimens. This floor-mounted self-contained unit is equipped with a user-friendly interface for ease of operation. The GenNotch 2000 is designed for cutting Charpy and Izod V-type and U-type notches according to the latest industry standards, delivering the highest quality notching samples equivalent to that of a milling machine.

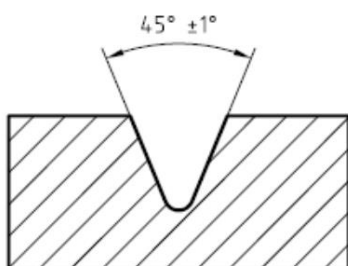


Alternative models including variable motor speeds for wider material ranges are available at your request.



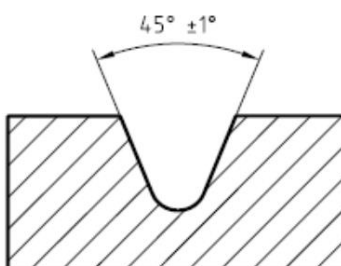
### Technical Specifications

GenNotch 2000 Series	
Motor Speed	N=1440r/min
Machine Dimensions (LxWxH)	12.8 x 14.8 x 18.1" 326 x 376 x 460mm
Maximum Specimen Thickness	1" 25mm
Cutting Tooth	<ul style="list-style-type: none"> <li>Type A comply with ISO 179, ISO 180, ASTM D6110, ASTM D256, GB/T1043, GB/T 1843,</li> <li>Type B, Comply with GB/T1043, GB/T 1843, ISO 179, ISO 180</li> <li>Type C, comply with GB/T1043, ISO 179</li> </ul>
Weight	66lbs / 30kg
Standard Accessories	<ol style="list-style-type: none"> <li>Main Unit: 1 set</li> <li>Cutting Knife: 1 set</li> <li>Fixture: 1 set</li> </ol>



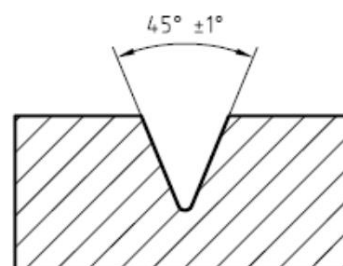
Radius of notch base  
 $r_N = 0,25 \text{ mm} \pm 0,05 \text{ mm}$

a) Type A



Radius of notch base  
 $r_N = 1,00 \text{ mm} \pm 0,05 \text{ mm}$

b) Type B



Radius of notch base  
 $r_N = 0,10 \text{ mm} \pm 0,02 \text{ mm}$

c) Type C