



NG-T-Press M Series – Manual Cutting Press System for Rubber Tensile Specimens

Standards: [ASTM D412](#), [ASTM E8](#), [ASTM B557](#), [ASTM A370](#)



ULTIMATE USER-FRIENDLINESS



LEADING DEPENDABILITY AND RELIABILITY



STRICT COMPLIANCE WITH INDUSTRY STANDARDS



STOCKED CONSUMABLES AND SPARES



TRUSTED AFTER SALES TECHNICAL SUPPORT



LIFETIME PRODUCT SUPPORT ADVANTAGE



Description

Our newest [manual cutting press system](#) is suitable for laboratories to create specimens from rubber, tape, and special materials. It can function as a compact presser, characterized by its simple structure, easy operation, and virtually no noise.

Manual Cutting Press System Technical Specifications

Model	NG-T-Press M Series EML102
Max. punching force	30kN
Puncture stroke	25mm
Diameter of punching head	84mm
Dimensions	19.70" x 15.75" x 19.70" / 500 x 400 x 400mm
Weight	187lbs / 85kg
Cutting knife	Optional, complies with ASTM D412

YouTube Video Link: <https://youtu.be/6DKQ08HKGpM>

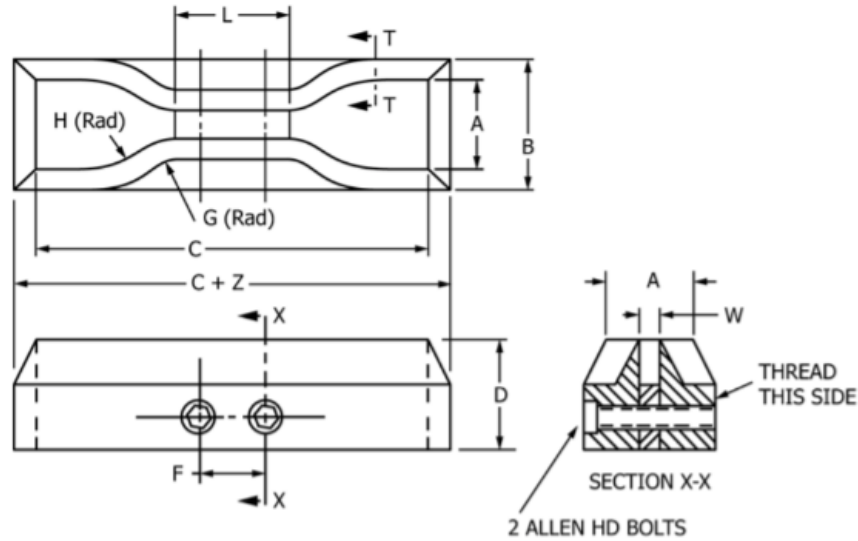


FIG. 2 Standard Dies for Cutting Dumbbell Specimens

Dimensions of Standard Dumbbell Dies ^A (Metric Units)								
Dimension	Units	Tolerance	Die A	Die B	Die C	Die D	Die E	Die F
A	mm	±1	25	25	25	16	16	16
B	mm	max	40	40	40	30	30	30
C	mm	min	140	140	115	100	125	125
D	mm	±6 ^B	32	32	32	32	32	32
D-E	mm	±1	13	13	13	13	13	13
F	mm	±2	38	38	19	19	38	38
G	mm	±1	14	14	14	14	14	14
H	mm	±2	25	25	25	16	16	16
L	mm	±2	59	59	33	33	59	59
W	mm	+0.05, -0.00	12	6	6	3	3	6
Z	mm	±1	13	13	13	13	13	13

^A Dies whose dimensions are expressed in metric units are not exactly the same as dies whose dimensions are expressed in U.S. customary units. Dies dimensioned in metric units are intended for use with apparatus calibrated in metric units.

^B For dies used in clicking machines it is preferable that this tolerance be ±0.5 mm.

Note: Additional ASTM D412 knives with Die B, C, D, E and F are available on request

*** Request a [formal quotation](#) or send an e-mail to sales@nextgentest.com for the most up-to-date pricing and applicable discounts and incentives.**