



## TestStar® Series Grips and Fixtures for Hydraulic UTM Integration

### Versatile, High-Performance Fixtures for Advanced Mechanical Testing

NextGen's TestStar® grips and fixtures are purpose-built to deliver superior mechanical testing performance in demanding industrial applications. These high-precision components are engineered to integrate seamlessly with our universal testing machines (UTMs), offering broad compatibility with international standards such as ASTM D638, ISO 6892, DIN 50125, and others.

Covering a comprehensive range of testing modes—including tensile, compression, bending, shear, and puncture—these fixtures provide flexibility and repeatability for research labs, quality control departments, and material certification facilities.

Each TestStar® accessory is designed with rigid construction, ergonomic use, and quick interchangeability, supporting both manual and pneumatic operation modes. Optimized for testing various materials including metals, polymers, composites, geotextiles, and more.



[GET A QUOTE](#)

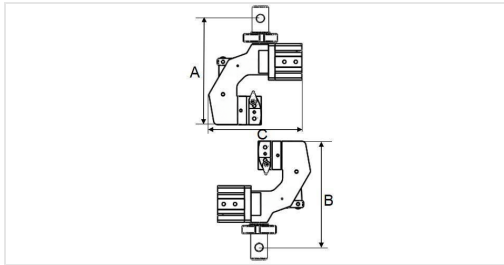


## NGQA502A – Pneumatic Tensile Grip (Snubbing Type)

The **NGQA502A Pneumatic Tensile Grip** is designed for low-force tension testing of filament materials using a snubbing

configuration. This pneumatic grip delivers consistent clamping pressure and precision alignment under

ambient conditions. Compatible with standard  $\Phi 10$  mm pin connections, it is ideal for delicate materials such as fibers or threads with specimen diameters up to 1.5 mm.



- **Application:** Tension test for filament materials.
- **Maximum Capacity:**  $\leq 500$  N load.
- **Grip Weight:** 0.56 kg (upper grip), 0.56 kg (lower grip).
- **Working Temperature:** Ambient.
- **Connection Type:**  $\Phi 10$  mm pin (upper and lower grips).
- **Height:** 140 mm (upper grip), 140 mm (lower grip).
- **Width:** 115 mm.
- **Specimen Size Compatibility:**  $\leq \Phi 1.5$  mm.





**Technical Specifications – NGQA502A Pneumatic Tensile Grip (Snubbing Type)**

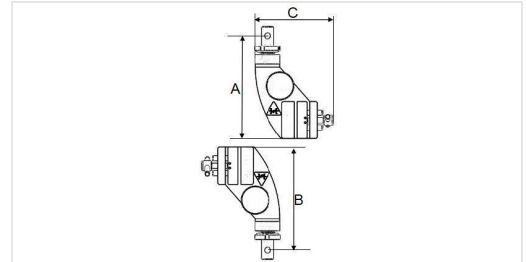
| Parameter                   | Specification                                    |
|-----------------------------|--|
| Application                 | Tension test for filament                        |
| Maximum Force Capacity      | ≤500 N   |
| Grip Weight                 | Upper Grip: 0.56 kg<br>Lower Grip: 0.56 kg       |
| Working Temperature         | Ambient  |
| Connection Type             | Upper Grip: Φ10 mm pin<br>Lower Grip: Φ10 mm pin |
| Height (A/B)                | Upper Grip: 140 mm<br>Lower Grip: 140 mm         |
| Width (C)                   | 115 mm   |
| Specimen Size               | ≤Φ1.5 mm   |
| Jaw Face Width (Shoe Upper) | 40 mm  |



## NGH203A – Tensile Grip (Manual Snubbing)

The **NGH203A Manual Snubbing Tensile Grip** is designed for tension testing of flexible materials such as glass fiber, cotton thread, and nylon cord. It uses a manual snubbing configuration to maintain secure grip without slippage. With a maximum capacity of 2 kN, it is suitable for low-force testing in ambient environments. Compatible with standard  $\Phi 10$  mm pin mounts, this grip accommodates samples below 500 tex.

- **Application:** Tension test for glass fiber, cotton thread, and nylon cord.
- **Maximum Capacity:**  $\leq 2$  kN load.
- **Grip Weight:** 1.7 kg (upper grip), 1.7 kg (lower grip).
- **Working Temperature:** Ambient.
- **Connection Type:**  $\Phi 10$  mm pin (upper and lower grips).
- **Height:** 165 mm (upper grip), 165 mm (lower grip).
- **Grip Width:** 125 mm.
- **Specimen Size Compatibility:**  $< 500$  tex.



### Technical Specifications – NGH203A Tensile Grip (Manual Snubbing)

| Parameter              | Specification   |
|------------------------|---|
| Application            | Tension test for glass fiber, cotton thread, nylon cord |
| Maximum Force Capacity | $\leq 2$ kN   |
| Grip Weight            | Upper Grip: 1.7 kg<br>Lower Grip: 1.7 kg                |



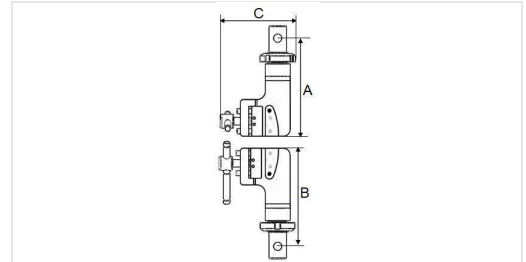
| Parameter           | Specification  |
|---------------------|--|
| Working Temperature | Ambient  |
| Connection Type     | Upper Grip: $\Phi$ 10 mm pin<br>Lower Grip: $\Phi$ 10 mm pin |
| Height (A/B)        | Upper Grip: 165 mm<br>Lower Grip: 165 mm                     |
| Grip Width (C)      | 125 mm   |
| Specimen Size       | < 500 tex  |



## NGB502B – Tensile Grip (Snubbing)

The **NGB502B Tensile Grip** is a snubbing-type fixture specifically designed for tension testing of steel wire. Ideal for delicate, thin-diameter samples up to  $\Phi 1.5$  mm, this grip offers precision and control for low-force testing up to 500N. It features compact construction, uniform upper/lower grip heights, and a wave-profile jaw face for stable sample engagement.

- **Application:** Tension test for steel wire.
- **Maximum Capacity:**  $\leq 500$  N load.
- **Grip Weight:** 0.7 kg (upper grip), 0.7 kg (lower grip).
- **Working Temperature:** Ambient.
- **Connection Type:**  $\Phi 10$  mm pin (upper and lower grips).
- **Height:** 115 mm (upper grip), 115 mm (lower grip).
- **Grip Width:** 90 mm.
- **Jaw Face Dimensions:** 36 mm (H)  $\times$  10 mm (W).
- **Specimen Diameter Compatibility:**  $\leq \Phi 1.5$  mm.



### Technical Specifications – NGB502B Tensile Grip (Snubbing)

| Parameter              | Specification                            |
|------------------------|--|
| Application            | Tension test for steel wire              |
| Maximum Force Capacity | $\leq 500$ N                             |
| Grip Weight            | Upper Grip: 0.7 kg<br>Lower Grip: 0.7 kg |
| Working Temperature    | Ambient                                  |

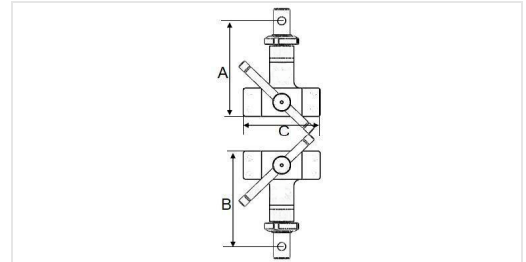


| Parameter           | Specification  |
|---------------------|--|
| Connection Type     | Upper Grip: $\Phi$ 10 mm pin<br>Lower Grip: $\Phi$ 10 mm pin |
| Height (A/B)        | Upper Grip: 115 mm<br>Lower Grip: 115 mm                     |
| Grip Width (C)      | 90 mm  |
| Jaw Face Dimensions | 36 mm (H) $\times$ 10 mm (W)                                 |
| Specimen Diameter   | $\leq \Phi$ 1.5 mm   |



## NGSD503A – Tensile Grip (Side Action)

The **NGSD503A Tensile Grip** is designed for tension testing of textiles and similar soft materials. With a side-action mechanism and wave-profile jaw faces, it provides consistent clamping without damaging delicate samples. Suitable for forces up to 5 kN, the grip supports ambient testing conditions and handles specimen thicknesses up to 14 mm. It is compatible with  $\Phi 10$  mm pin connections for integration with standard testing machines.



- **Application:** Tension test for textile materials.
- **Maximum Capacity:**  $\leq 5$  kN load.
- **Grip Weight:** 1.73 kg (upper grip), 1.73 kg (lower grip).
- **Working Temperature:** Ambient.
- **Connection Type:**  $\Phi 10$  mm pin (upper and lower grips).
- **Height:** 120 mm (upper grip), 120 mm (lower grip).
- **Grip Width:** 95 mm.
- **Jaw Face Dimensions:** 95 mm  $\times$  35 mm (wave-profile).
- **Specimen Thickness Compatibility:**  $\leq 14$  mm.

### Technical Specifications – NGSD503A Tensile Grip (Side Action)

| Parameter              | Specification                              |
|------------------------|--|
| Application            | Tension test for textile                   |
| Maximum Force Capacity | $\leq 5$ kN                                |
| Grip Weight            | Upper Grip: 1.73 kg<br>Lower Grip: 1.73 kg |

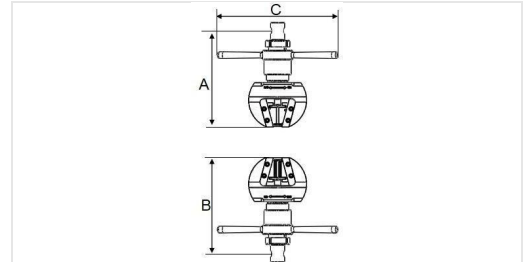


| Parameter           | Specification  |
|---------------------|--|
| Working Temperature | Ambient  |
| Connection Type     | Upper Grip: $\Phi 10$ mm pin<br>Lower Grip: $\Phi 10$ mm pin |
| Height (A/B)        | Upper Grip: 120 mm<br>Lower Grip: 120 mm                     |
| Grip Width (C)      | 95 mm  |
| Jaw Face Dimensions | 95 mm $\times$ 35 mm<br>(Wave-profile)                       |
| Specimen Thickness  | $\leq 14$ mm   |



## NGSA105A – Wedge Tensile Grip (Wedge Action)

The **NGSA105A Wedge Tensile Grip** is built for high-force tension testing of both flat and round specimens made of metal or composite materials. With a robust construction rated for loads up to 100 kN, this fixture is ideal for samples with hardness below 30 HRC and tensile strength under 600 MPa. It integrates easily with universal testing machines using  $\Phi 18$  mm pin connections and delivers uniform clamping through wedge action.



- **Application:** Tension test for flat and round specimens of metal and composite materials.
- **Maximum Capacity:**  $\leq 100$  kN load.
- **Grip Weight:** 15.3 kg (upper grip), 15.3 kg (lower grip).
- **Working Temperature:** Ambient.
- **Connection Type:**  $\Phi 18$  mm pin (upper and lower grips).
- **Height:** 290 mm (upper grip), 290 mm (lower grip).
- **Grip Width:** 370 mm.
- **Note:** Suitable for specimens with hardness  $< 30$  HRC and tensile strength  $< 600$  MPa.

### Technical Specifications – NGSA105A Wedge Tensile Grip (Wedge Action)

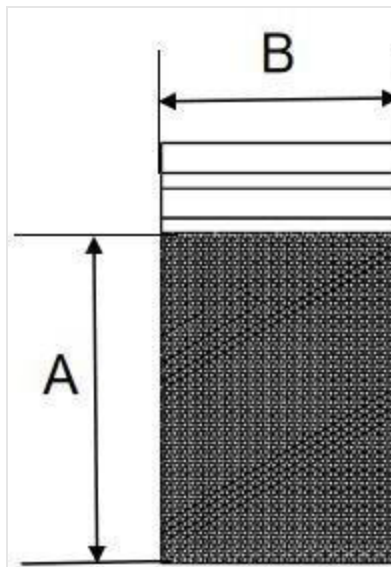
| Parameter              | Specification   |
|------------------------|---|
| Application            | Tension test for flat and round specimens of metal, composite |
| Maximum Force Capacity | $\leq 100$ kN   |
| Grip Weight            | Upper Grip: 15.3 kg<br>Lower Grip: 15.3 kg                    |
| Working Temperature    | Ambient   |



| Parameter            | Specification  |
|----------------------|--|
| Connection Type      | Upper Grip: $\Phi 18$ mm pin<br>Lower Grip: $\Phi 18$ mm pin |
| Height (A/B)         | Upper Grip: 290 mm<br>Lower Grip: 290 mm                     |
| Grip Width (C)       | 370 mm   |
| Specimen Requirement | Hardness < 30 HRC, Tensile Strength < 600 MPa                |

## Optional Jaw Faces – NGS105A Grip

To accommodate a wider variety of specimen shapes and sizes, the NGS105A Wedge Tensile Grip is available with optional flat and vee jaw faces. All jaw faces are designed with a 1.5 mm pitch to ensure stable and uniform clamping. Both flat and vee types offer consistent dimensions and compatibility with specimens of varying thicknesses and diameters.

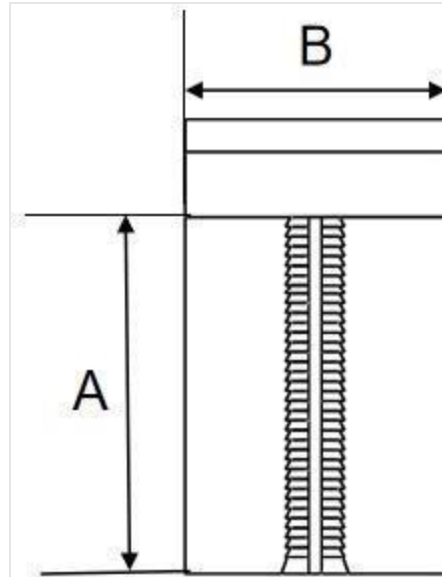


Flat Jaw Faces (Optional)

**Note:** All flat jaw faces have a pitch of 1.5 mm.



**Vee Jaw Faces (Optional)**

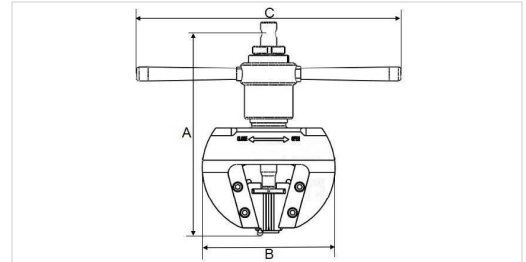


**Note:** All vee jaw faces have a pitch of 1.5 mm.



## NGSA304A – Wedge Tensile Grip (Wedge Action)

The **NGSA304A Wedge Tensile Grip** is designed for performing tension tests on flat and round specimens made from metals and composite materials. With a maximum force capacity of 30 kN, this grip is ideal for medium-load testing environments. It supports specimens with hardness below 30 HRC and tensile strength below 600 MPa. The wedge-action mechanism ensures stable gripping, while  $\Phi 10$  mm pin connections allow for easy integration into standard testing machines.



- **Application:** Tension test for flat and round specimens of metal and composite materials.
- **Maximum Capacity:**  $\leq 30$  kN load.
- **Grip Weight:** 13.5 kg (upper grip), 13.5 kg (lower grip).
- **Working Temperature:** Ambient.
- **Connection Type:**  $\Phi 10$  mm pin (upper and lower grips).
- **Height:** 255 mm (upper grip), 175 mm (lower grip).
- **Grip Width:** 350 mm.
- **Note:** Suitable for specimens with hardness  $< 30$  HRC and tensile strength  $< 600$  MPa.

### Technical Specifications – NGSA304A Wedge Tensile Grip (Wedge Action)

| Parameter              | Specification   |
|------------------------|---|
| Application            | Tension test for flat and round specimens of metal, composite |
| Maximum Force Capacity | $\leq 30$ kN  |
| Grip Weight            | Upper Grip: 13.5 kg<br>Lower Grip: 13.5 kg                    |

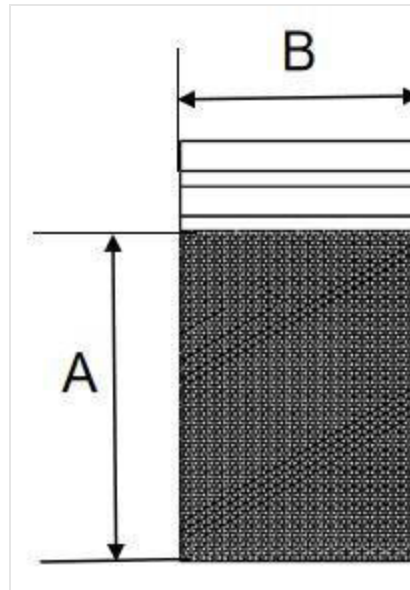


| Parameter            | Specification  |
|----------------------|--|
| Working Temperature  | Ambient  |
| Connection Type      | Upper Grip: $\Phi$ 10 mm pin<br>Lower Grip: $\Phi$ 10 mm pin |
| Height (A/B)         | Upper Grip: 255 mm<br>Lower Grip: 175 mm                     |
| Grip Width (C)       | 350 mm   |
| Specimen Requirement | Hardness < 30 HRC, Tensile Strength < 600 MPa                |

## Optional Jaw Faces – NGS304A Wedge Tensile Grip

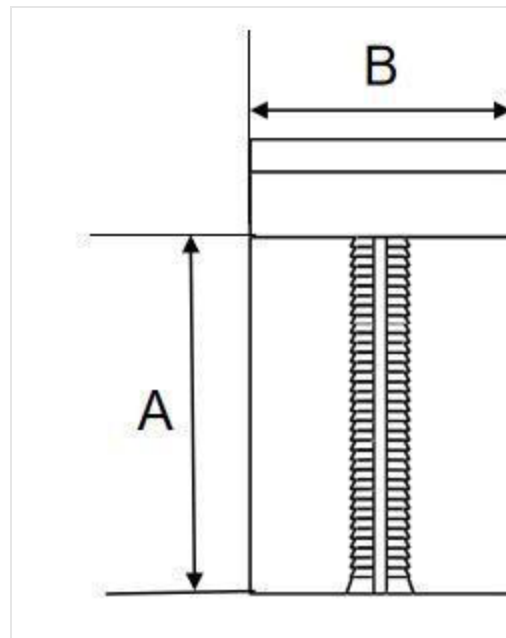
The NGS304A Wedge Tensile Grip supports a range of optional jaw faces designed to accommodate both flat and round specimens. All jaws are engineered with a 1.5 mm pitch, ensuring firm, non-slip engagement during medium-load testing of metal and composite materials.

### Flat Jaw Faces (Optional)



**Note:** All flat jaw faces have a pitch of 1.5 mm.

### Vee Jaw Faces (Optional)

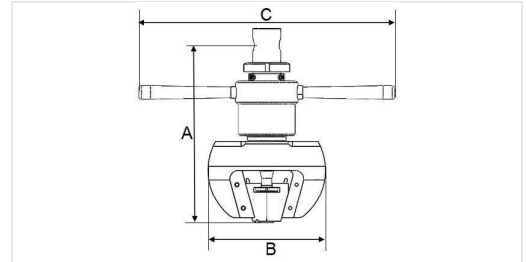


**Note:** All vee jaw faces have a pitch of 1.5 mm.



## NGSA305A – Wedge Tensile Grip (Wedge Action)

The **NGSA305A Wedge Tensile Grip** is designed for high-capacity tensile testing of flat and round specimens made from metal and composite materials. With a maximum load capacity of 300 kN and a heavy-duty wedge-action mechanism, it offers reliable and stable clamping for demanding applications. The grip is compatible with  $\Phi 28$  mm pin connections and supports specimens with hardness below 30 HRC and tensile strength below 600 MPa.



- **Application:** Tension test for flat and round specimens of metal and composite materials.
- **Maximum Capacity:**  $\leq 300$  kN load.
- **Grip Weight:** 38.5 kg (upper grip), 38.5 kg (lower grip).
- **Working Temperature:** Ambient.
- **Connection Type:**  $\Phi 28$  mm pin (upper and lower grips).
- **Height:** 348 mm.
- **Grip Body Width:** 248 mm.
- **Overall Width:** 538 mm.
- **Note:** Suitable for specimens with hardness  $< 30$  HRC and tensile strength  $< 600$  MPa.

### Technical Specifications – NGSA305A Wedge Tensile Grip (Wedge Action)

| Parameter              | Specification   |
|------------------------|---|
| Application            | Tension test for flat and round specimens of metal, composite |
| Maximum Force Capacity | $\leq 300$ kN   |
| Grip Weight            | Upper Grip: 38.5 kg<br>Lower Grip: 38.5 kg                    |

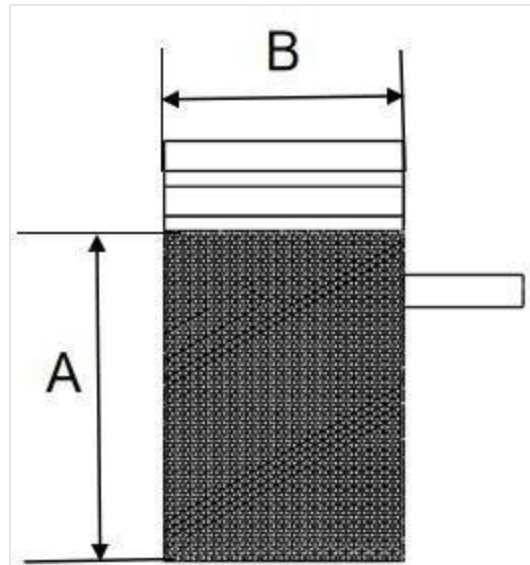


| Parameter            | Specification  |
|----------------------|--|
| Working Temperature  | Ambient  |
| Connection Type      | Upper Grip: $\Phi 28$ mm pin<br>Lower Grip: $\Phi 28$ mm pin |
| Height (A)           | 348 mm   |
| Grip Body Width (B)  | 248 mm   |
| Overall Width (C)    | 538 mm   |
| Specimen Requirement | Hardness < 30 HRC, Tensile Strength < 600 MPa                |

## Optional Jaw Faces – NGS305A Wedge Tensile Grip

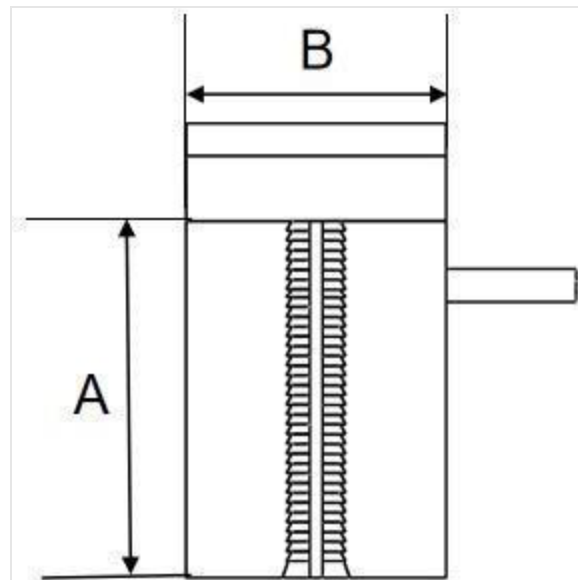
The NGS305A supports a full range of optional flat and vee jaw faces, allowing adaptation to a variety of flat and round specimens. All jaws are precisely machined with a 2.0 mm pitch to maintain uniform gripping pressure and prevent slippage during high-capacity tensile testing.

### Flat Jaw Faces (Optional)



**Note:** All flat jaw faces have a pitch of 2.0 mm.

### Vee Jaw Faces (Optional)

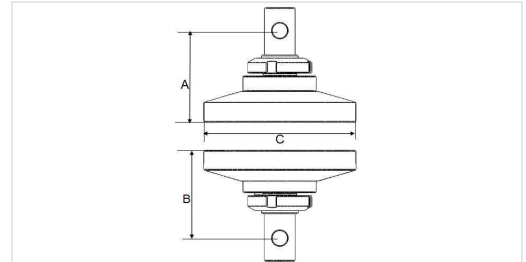




## NGA204A – Wedge Action Grip

The **NGA204A Wedge Action Grip** is engineered for compression testing of concrete, metal, and plastic specimens. Designed for medium-capacity loads up to 20 kN, this fixture combines compact form with reliable performance under ambient conditions. Compatible with  $\Phi 10$  mm pin connections, the grip provides a stable setup for compressive force applications in various material testing environments.

- **Application:** Compression test for concrete, metal, and plastic materials.
- **Maximum Capacity:**  $\leq 20$  kN load.
- **Grip Weight:** 1.4 kg (upper grip), 1.4 kg (lower grip).
- **Working Temperature:** Ambient.
- **Connection Type:**  $\Phi 10$  mm pin (upper and lower grips).
- **Height:** 70 mm (upper grip), 60 mm (lower grip).
- **Diameter:** 100 mm.



### Technical Specifications – NGA204A Wedge Action Grip

| Parameter              | Specification                                 |
|------------------------|---|
| Application            | Compression test for concrete, metal, plastic |
| Maximum Force Capacity | $\leq 20$ kN                                  |
| Grip Weight            | Upper Grip: 1.4 kg<br>Lower Grip: 1.4 kg      |
| Working Temperature    | Ambient                                       |



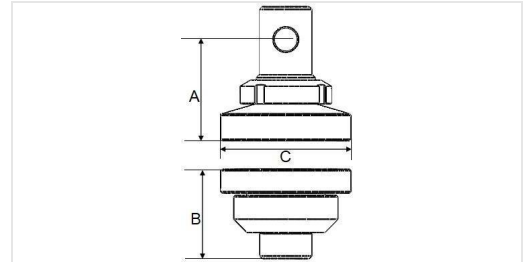
| Parameter       | Specification  |
|-----------------|--|
| Connection Type | Upper Grip: $\Phi$ 10 mm pin<br>Lower Grip: $\Phi$ 10 mm pin |
| Height (A/B)    | Upper Grip: 70 mm<br>Lower Grip: 60 mm                       |
| Diameter (C)    | 100 mm   |



## NGA105A – Compression Fixture

The **NGA105A Compression Fixture** is designed for high-force compression testing of concrete, metals, plastics, and composite materials. Built to withstand forces up to 100 kN, the fixture features  $\Phi 18$  mm pin connections and a sphere-seated configuration for improved load alignment and accuracy. It is ideal for general-purpose compression testing in ambient environments.

- **Application:** Compression test for concrete, metal, plastic, composite, and similar materials.
- **Maximum Capacity:**  $\leq 100$  kN load.
- **Grip Weight:** 2.5 kg (upper grip), 2.4 kg (lower grip).
- **Working Temperature:** Ambient.
- **Connection Type:**  $\Phi 18$  mm pin (upper and lower grips).
- **Height:** 75 mm (upper grip), 68 mm (lower grip).
- **Diameter:** 100 mm.
- **Sphere Seated:** Yes.



### Technical Specifications – NGA105A Compression Fixture

| Parameter              | Specification  |
|------------------------|--|
| Application            | Compression test for concrete, metal, plastic, composite etc |
| Maximum Force Capacity | $\leq 100$ kN  |
| Grip Weight            | Upper Grip: 2.5 kg<br>Lower Grip: 2.4 kg                     |
| Working Temperature    | Ambient  |



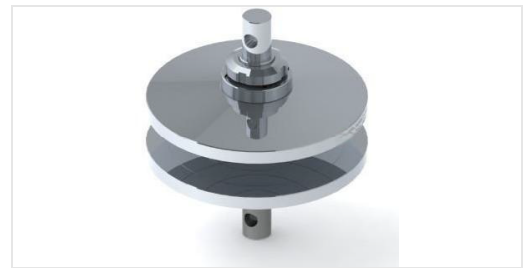
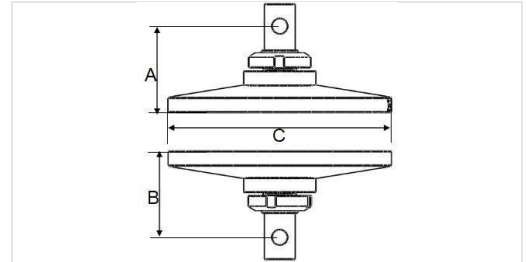
| Parameter       | Specification  |
|-----------------|--|
| Connection Type | Upper Grip: $\Phi$ 18 mm pin<br>Lower Grip: $\Phi$ 18 mm pin |
| Height (A/B)    | Upper Grip: 75 mm<br>Lower Grip: 68 mm                       |
| Diameter (C)    | 100 mm   |
| Sphere Seated   | Yes  |



## NGC502A – Compression Fixture

The **NGC502A Compression Fixture** is purpose-built for low-force compression testing of non-metallic materials. With a maximum capacity of 500N, this fixture is lightweight and features  $\Phi 10$ mm pin connections for seamless integration with standard testing machines. Its 150mm diameter offers a broad, stable base suitable for softer and flexible specimen types.

- **Application:** Compression test for non-metallic materials.
- **Maximum Capacity:**  $\leq 500$  N load.
- **Grip Weight:** 1.5 kg (upper grip), 1.5 kg (lower grip).
- **Working Temperature:** Ambient.
- **Connection Type:**  $\Phi 10$  mm pin (upper and lower grips).
- **Height:** 55 mm (upper grip), 60 mm (lower grip).
- **Diameter:** 150 mm.



### Technical Specifications – NGC502A Compression Fixture

| Parameter              | Specification                              |
|------------------------|--|
| Application            | Compression test for non-metallic material |
| Maximum Force Capacity | $\leq 500$ N                               |
| Grip Weight            | Upper Grip: 1.5 kg<br>Lower Grip: 1.5 kg   |
| Working Temperature    | Ambient                                    |



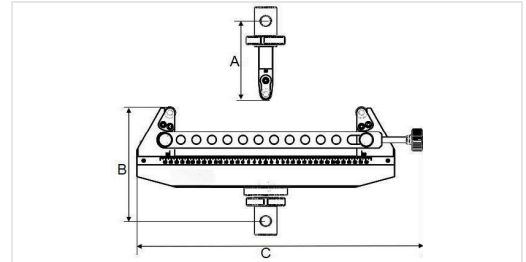
| Parameter       | Specification  |
|-----------------|--|
| Connection Type | Upper Grip: $\Phi$ 10 mm pin<br>Lower Grip: $\Phi$ 10 mm pin |
| Height (A/B)    | Upper Grip: 55 mm<br>Lower Grip: 60 mm                       |
| Diameter (C)    | 150 mm   |



## NGA105A – Bending Fixture (3-Point Bending)

The **NGA105A 3-Point Bending Fixture** is designed for high-load testing of flat and round metallic specimens. It supports forces up to 100kN and provides an adjustable span up to 360mm, ensuring flexibility in test setup. The fixture includes  $\Phi 20$  mm loading and support rollers and is suitable for ambient laboratory conditions. Compatible with  $\Phi 18$  mm pin-mounted machines.

- **Application:** Bending test for flat and round metallic specimens.
- **Maximum Capacity:**  $\leq 100$  kN load.
- **Grip Weight:** 0.3 kg (upper grip), 3.1kg (lower grip).
- **Working Temperature:** Ambient.
- **Connection Type:**  $\Phi 18$  mm pin (upper and lower grips).
- **Span (Adjustable):**  $\leq 360$  mm.
- **Height:** 140 mm (upper grip), 205 mm (lower grip).
- **Maximum Specimen Width:** 80 mm.
- **Base Width:** 505 mm.
- **Loading Roller Diameter:**  $\Phi 20$  mm.
- **Support Roller Diameter:**  $\Phi 20$  mm.



### Technical Specifications – NGA105A 3-Point Bending Fixture

| Parameter              | Specification                                      |
|------------------------|--|
| Application            | Bending test for flat and round metallic specimens |
| Maximum Force Capacity | $\leq 100$ kN                                      |

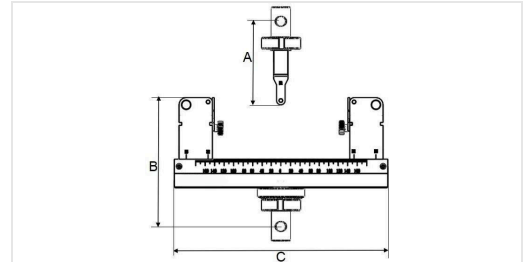


| Parameter              | Specification  |
|------------------------|--|
| Grip Weight            | Upper Grip: 0.3 kg<br>Lower Grip: 3.1 kg                     |
| Working Temperature    | Ambient  |
| Connection Type        | Upper Grip: $\Phi$ 18 mm pin<br>Lower Grip: $\Phi$ 18 mm pin |
| Span (Adjustable)      | $\leq$ 360 mm  |
| Height (A/B)           | Upper Grip: 140 mm<br>Lower Grip: 205 mm                     |
| Maximum Specimen Width | 80 mm  |
| Base Width (C)         | 505 mm   |
| Loading Roller         | $\Phi$ 20 mm   |
| Support Roller         | $\Phi$ 20 mm   |

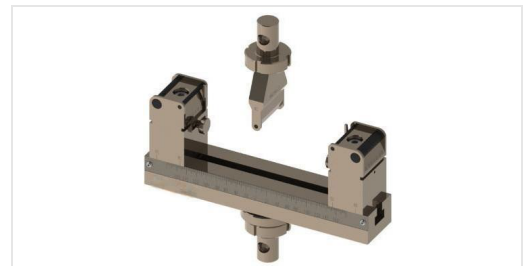


## NGA104A – Bending Fixture (3-Point Bending)

The **NGA104A 3-Point Bending Fixture** is a compact and lightweight solution for performing bending tests on flat and round metallic specimens. With a capacity of up to 10 kN and an adjustable span of up to 160 mm, it is ideal for low-force applications. The fixture is equipped with both R5 mm and R2 mm rollers for flexible specimen support.



- **Application:** Bending test for flat and round metallic specimens.
- **Maximum Capacity:** ≤10 kN load.
- **Grip Weight:** 0.1 kg (upper grip), 0.6 kg (lower grip).
- **Working Temperature:** Ambient.
- **Connection Type:** Φ10 mm pin (upper and lower grips).
- **Span (Adjustable):** ≤160 mm.
- **Height:** 90 mm (upper grip), 140 mm (lower grip).
- **Maximum Specimen Width:** 40 mm.
- **Base Width:** 505 mm.
- **Loading Roller:** R5 mm, R2 mm.
- **Support Roller:** R5 mm, R2 mm.



### Technical Specifications – NGA104A 3-Point Bending Fixture

| Parameter              | Specification                                      |
|------------------------|--|
| Application            | Bending test for flat and round metallic specimens |
| Maximum Force Capacity | ≤10 kN   |



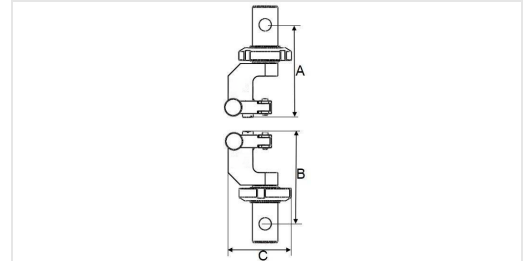
| Parameter              | Specification  |
|------------------------|--|
| Grip Weight            | Upper Grip: 0.1 kg<br>Lower Grip: 0.6 kg                     |
| Working Temperature    | Ambient  |
| Connection Type        | Upper Grip: $\Phi$ 10 mm pin<br>Lower Grip: $\Phi$ 10 mm pin |
| Span (Adjustable)      | $\leq$ 160 mm  |
| Height (A/B)           | Upper Grip: 90 mm<br>Lower Grip: 140 mm                      |
| Maximum Specimen Width | 40 mm  |
| Base Width (C)         | 505 mm   |
| Loading Roller         | R5 mm, R2 mm   |
| Support Roller         | R5 mm, R2 mm   |



## NGSA102A – Tensile Grip (Side Action)

The **NGSA102A Tensile Grip** is designed for tension testing of delicate, non-metallic single wires such as spandex wire. With a low force capacity of up to 100N, this lightweight fixture is ideal for precision applications requiring minimal clamping force. Its compact design supports  $\Phi 10$  mm pin mounting and features small jaw faces for secure gripping of wires  $\leq \Phi 1.5$  mm in diameter.

- **Application:** Tension test for spandex wire and other non-metal single wire.
- **Maximum Capacity:**  $\leq 100$  N load.
- **Grip Weight:** 0.4 kg (upper grip), 0.4 kg (lower grip).
- **Working Temperature:** Ambient.
- **Connection Type:**  $\Phi 10$  mm pin (upper and lower grips).
- **Height:** 75 mm (upper and lower grips).
- **Overall Width:** 50 mm.
- **Specimen Size:**  $\leq \Phi 1.5$  mm.
- **Jaw Face Size:** 10 mm (H)  $\times$  10 mm (W).



### Technical Specifications – NGSA102A Tensile Grip (Side Action)

| Parameter              | Specification   |
|------------------------|---|
| Application            | Tension test for spandex wire and non-metal single wire |
| Maximum Force Capacity | $\leq 100$ N  |



| Parameter           | Specification  |
|---------------------|--|
| Grip Weight         | Upper Grip: 0.4 kg<br>Lower Grip: 0.4 kg                     |
| Working Temperature | Ambient  |
| Connection Type     | Upper Grip: $\Phi$ 10 mm pin<br>Lower Grip: $\Phi$ 10 mm pin |
| Height (A/B)        | 75 mm (both grips)   |
| Overall Width (C)   | 50 mm  |
| Specimen Size       | $\leq \Phi$ 1.5 mm   |
| Jaw Face Size       | 10 mm (H) $\times$ 10 mm (W)                                 |

NextGen's TestStar® grips and fixtures collection provides a best-in-class solution for laboratories and facilities seeking accurate, repeatable mechanical test results. From snubbing grips to wedge-action tensile and multi-point bending setups, the TestStar® series is a proven choice across industries.

All fixtures are fully compatible with NextGen's universal testing machines and can be ordered as part of new system builds or integrated into existing setups. Contact our technical sales team to configure the optimal solution for your testing needs.

[GET A QUOTE](#)